



# **Wexford Children and Young People's Services Committee**

Children and Young  
People's Plan

**Summary Plan 2025 – 2027**

What is the Children and Young People’s Services Committee (CYPSC)

Our main purpose is to improve inter-agency cooperation and collaboration for better outcomes for children and young people aged 0-24 years.

We focus on five national outcomes

- Outcome 1:** Active and healthy with physical and mental well being
- Outcome 2:** Achieving full potential in all areas of learning and development
- Outcome 3:** Safe and protected from harm
- Outcome 4:** Have economic security and opportunity
- Outcome 5:** Connected, respected and contributing to their world

Who We Are

- |  |  |
|--|--|
| An Garda Síochána  | South East Technological University                |
| Barnardos  | Tusla  |
| Department of Social Protection                          | Waterford and Wexford Education and Training Board |
| Family Resource Centres                                  | Wexford County Childcare Committee                 |
| Ferns Diocesan Youth Service                             | Wexford County Council                             |
| Gorey Youth Needs Group                                  | Wexford Local Development                          |
| Health Service Executive                                 | Wexford Rape Crisis                                |
| Irish Primary Principals Network                         | Wexford Women's Refuge                             |
| National Association of Principals and Deputy Principals | Youth New Ross                                     |
| Probation Service  |  |

Contact

Wexford Children and Young People’s Services Committee welcomes comments and feedback about our Children and Young People’s Plan

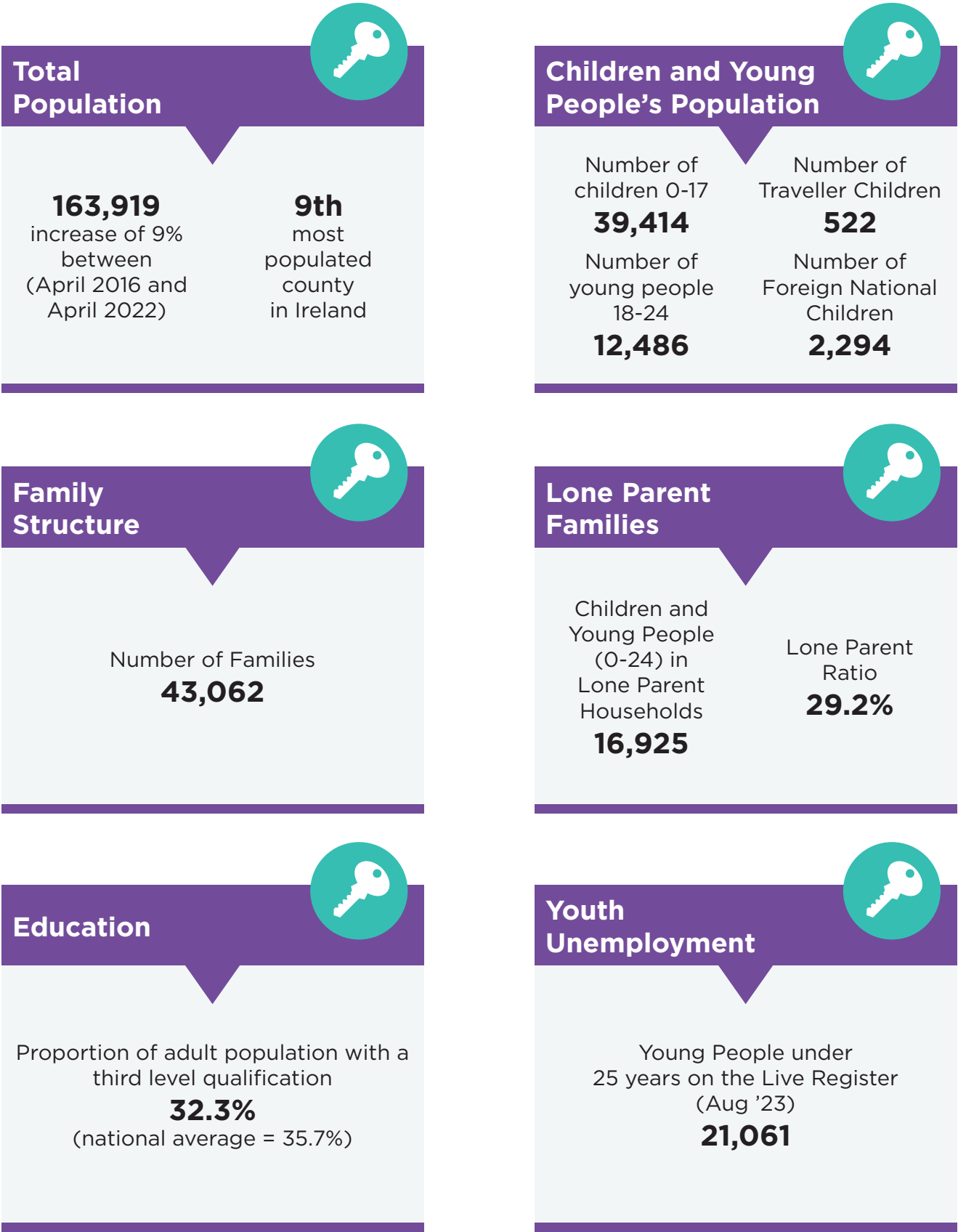
**Contact:** Sheila Barrett  
Wexford CYPSC Co-ordinator

Tusla Child and Family Agency  
Ely Hospital, Ferrybank  
Wexford, Y35 HP78

**Email:** sheila.barrett@tusla.ie

Copies of this plan are available at:  
**www.cypsc.ie**

Some Key points about Wexford (Based on information from 2022 Census and other data sources)



How the Plan Was Developed

Our Children and Young People's Plan is based on the most recent information from the 2022 Census and other data sources. It is also informed by the working experience of front-line staff working with children and families.

We consulted widely to ensure that we heard the voices of children and young people. We asked children and young people across Co. Wexford what they considered to be the key issues in their lives. We are grateful to all the children and young people who contributed their thoughts and ideas to this plan.

A Snapshot of the views of some of the Children and Young People in Co. Wexford





Top Issues Identified During the Consultation

Top 10 Issues Identified by Young Adults through Survey	Top 10 Issues for Young People Identified through Parents Survey	Top 10 issues for Parents in Wexford from the Parents Survey
1. Lack of accessible youth friendly activities and facilities	1. Mental Health	1. Financial concerns
2. Mental Wellbeing	2. School/Education Challenges	2. Managing anxiety and the mental health of their children
3. Drugs, Alcohol & Vaping	3. Vaping, Drugs & Alcohol	3. Boundaries & behaviour
4. Education pressures	4. Unhealthy Lifestyle	4. Managing children’s screentime
5. Cyber Bullying	5. Peer Pressure	5. Navigating the system for children/young people with additional needs
6. Poverty	6. Cannot be themselves	6. Access to Disability Services
7. Unhealthy Lifestyle	7. On-line issues and challenges	7. Parental wellbeing
8. Relationship Issues	8. Accessible services and activities for those not involved in sports	8. Parenting alone
9. Youth unemployment	9. Relationship issues	9. School avoidance
10. Lack of accessible transport	10. Integration into a new area if recently arrived in the county	10. Respite time



Priority Areas

Wexford CYPSC have identified priority areas under each of the five national outcomes.

Outcome Area	Local Priority Area
<b>Active and healthy, physical, and mental wellbeing</b>	Infant and Youth Mental Health Physical Activity Early Childhood Nutrition Young Carers Substance Use Bereavement Support Disability Equality
<b>Achieving full potential in learning and development</b>	Literacy Transitions through the Education System 3rd Level Participation Emotionally Based School Avoidance Traveller and Roma Education
<b>Safe and protected from harm</b>	Parenting Support Domestic Sexual and Gender Based Violence Family Support Safe Internet Use
<b>Economic security and opportunity</b>	Young People who are not in education, training or employment Young Travellers Aftercare Child Poverty
<b>Connected, respected, and contributing to their world</b>	Participation of children and young people New Communities Comhairle na nÓg Youth Spaces
<b>Change Management</b>	Disability Equality Interagency Communication Membership Research

## To Find Out More...

If you are interested in finding out more, you can access the full “Wexford Children and Young People’s Plan 2025 – 2027” on the CYPSC website at **[www.cypsc.ie](http://www.cypsc.ie)**.



Visit the Wexford CYPSC website at [www.wexfordcypsc.ie](http://www.wexfordcypsc.ie)